

# IMPORTANT INSTALLATION INFORMATION FOR BACKWASH FILTERS



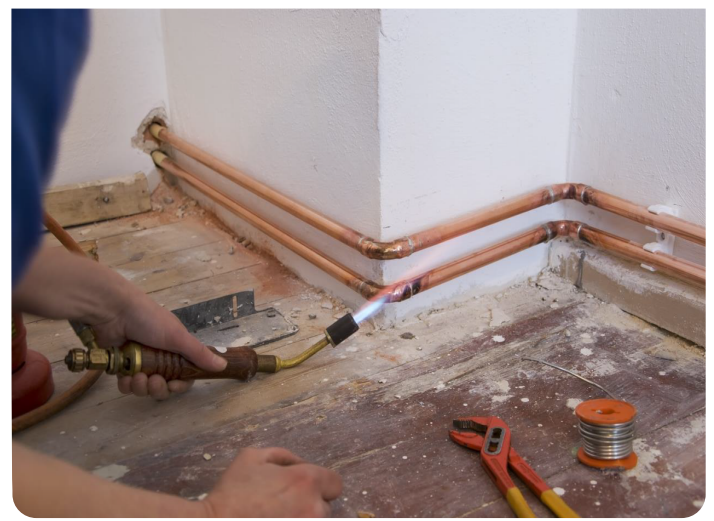
## BEFORE YOU BEGIN

- ✓ **Water Conditions:** Ensure water pressure is below 80 PSI and temperature is below 110°F.
- ✓ **Intended Use:** This system is not suitable for critical applications or areas with potential health hazards.
- ✓ **Water Quality:** Do not use with water contaminated by hydrocarbons (gasoline, kerosene, etc.).
- ✓ **Lubrication:** Avoid using lubricants except for a light silicone application on specific O-rings.



# INSTALLATION GUIDELINES

- ✦ **Tightening:** Hand-tighten nuts and caps. Use a plastic wrench if needed. Avoid using pliers, pipe wrenches, or screwdrivers.
- ✦ **Sealants:** Do not use sealants on threads, except Teflon tape for specific fittings.
- ✦ **Electronics Reset:** After valve maintenance, reset electronics by unplugging and replugging the power source.
- ✦ **Drain Line:** Protect the drain line flow control fitting from heat sources like soldering.
- ✦ **Plumbing:** Adhere to local plumbing codes. Use a minimum ½ inch drain line (¾ inch for high flow rates or long runs). Allow soldered joints to cool completely before connecting fittings. Prevent solvent cement contact with O-rings, split rings, and valves.
- ✦ **Electrical:** Comply with local electrical codes and use an uninterrupted outlet. Install a grounding strap on metal pipes as required.



## ✦ ADDITIONAL CONSIDERATIONS

- Use flexible connectors for all systems.
- Install a vacuum break to prevent damage.
- Protect the system from water damage, freezing, hot water, excessive pressure/vacuum, and other hazards.
- Consult a licensed plumber for potential needs like check valves, expansion tanks, pressure reducers, or backflow preventers.



## NOTE

This guide provides a general overview of the installation process. For detailed, step-by-step instructions, please refer to the complete product manual.

Request a copy by emailing us at

[sales@wecofilters.com](mailto:sales@wecofilters.com)



**Water Engineering Corporation**  
Signal Hill, CA U.S.A  
1 (888) 675-5187  
[sales@wecofilters.com](mailto:sales@wecofilters.com)



[wecofilters.com](http://wecofilters.com)